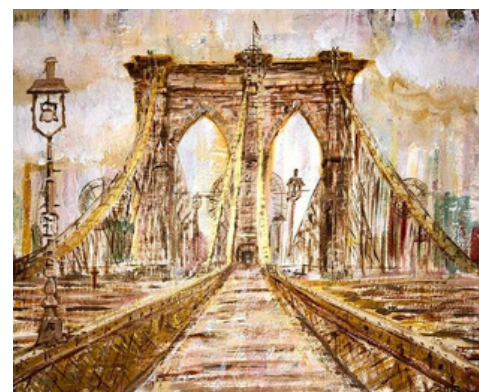


# SOUTHBURY MAKERS SPOTLIGHT



## Sherrie Solimene Romano, painter

By Kelly Keenan, SEDC Arts & Culture Subcommittee

Photos courtesy of the artist

### **Q: How long have you been in Southbury?**

**A:** My family and I have lived here for over 15 years. We have lived all over Connecticut and at the time had wanted to get closer to Newtown where my husband was working. Our kids were 5 and 3 and we just fell in love with Southbury. We especially loved Main Street and the gazebo and seeing people out walking with their kids and dogs. We loved that it seemed to have all the shops we would need but had a small town rural feel too, with farms and hiking spots, lakes and rivers. It's been such a great place to raise our kids who are now in college and we have no plans to leave anytime soon!

### **Q: How did you get into painting, and how long have you been doing it?**

**A:** Drawing, painting and crafts were a big part of my life as a child. In school I took whatever art classes I could take. It's always been a part of me.

### **Q: Do you have a favorite subject matter and/or source of inspiration?**

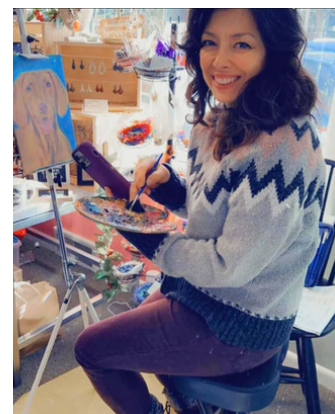
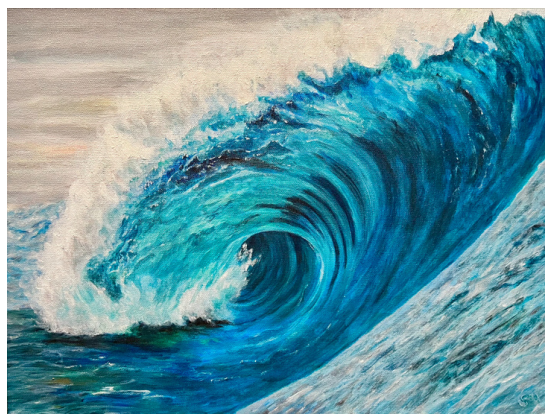
**A:** There are a wide variety of things that inspire me. I love to travel, I love to hike and I love the beach. I take lots of pictures and think about how I would turn them into paintings. It could be landscapes and nature for a while and then I will switch to cityscapes, buildings and bridges. Or I will see an object in a thrift store that inspires me to paint something on it. I also love to paint pet portraits. I started out painting my dog and a few friends' dogs. I walk dogs and cat sit for people as well so I am an animal lover! I try to capture their personality if I have a good reference photo. I try to add movement in the fur and I add different colors that you don't normally see to highlight things and make it fun and interesting. I love seeing the joy and excitement of the people who are getting their pet's portrait. It's a great feeling.

### **Q: Is there a special place in Southbury you go to for inspiration?**

**A:** Platt Farm Preserve and the Southbury Land Trust area around there is very special to me and my family. We lived walking distance to there for 10 years. We hike there with our kids and our dog. We've been sledding there. My husband has camped there. We take all our family and friends who visit us to walk or hike there. It's just so beautiful and peaceful during every season whether you're on Flood Bridge Road or by the river or up in the hills and woods. The farm house and red barn on Flood Bridge Rd are a perfect subject for painting. We usually start with what we know when creating anything and I'm so used to seeing it all the time that it feels like home to me.



# SOUTHBURY MAKERS SPOTLIGHT



**Q: What is your favorite part of the process? Least favorite?**

**A:** My favorite part of the process is when I see something and it starts to look like a painting in my mind. I stare at things for a long time imagining how I would capture the shadows and colors. Then I take a picture and I get excited about starting a new project! My least favorite part of the process is when I can't seem to be finished with my artwork. I have to walk away from it and come back a few times. Even when I look at finished pieces years after I've made them, I will want to do more to it!

**Q: Are there any particular artists you admire ?**

**A:** I love Renoir, Frida Kahlo, Van Gogh and many more. But I am also extremely inspired by contemporary artists. I love going to small museums and galleries or just looking at street art. I get inspired to make art every time I see art. Yayoi Kusama, Flog, and Mauricio Ramírez are some contemporary artists I admire.

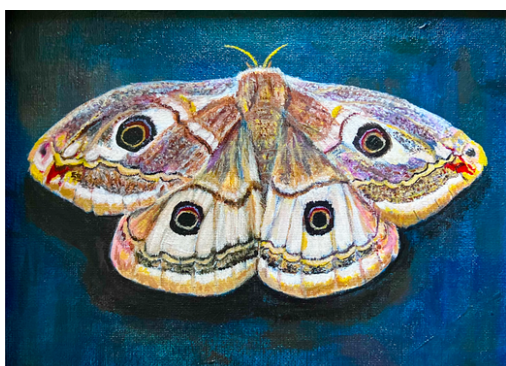
**Q: Are there any other special talents you'd like to share with the community?**

**A:** I've painted wall murals and would love to do more, as well as furniture, glassware and found objects. I can also lead "paint and sips" and art classes.





**Q: Do you have any advice for emerging artists who are trying to find their voice?**

**A:** The more you make art the more your style emerges. Do a small painting every day for a month or every other day and just see what happens. I sometimes do this when I feel stuck in a rut. Don't worry about technique and fancy supplies. Use what you have and just dive in. I often make art from found objects and used canvases. I experiment until something good comes out of it.

For more information about this month's maker, or if you are interested in being featured in an upcoming issue of the Southbury Makers Spotlight, contact us at [edcsouthburymakers@gmail.com](mailto:edcsouthburymakers@gmail.com) or visit [www.southbury-ct.org/arts](http://www.southbury-ct.org/arts).



**WHERE TO FIND THEM**

-  [sherrieandart@outlook.com](mailto:sherrieandart@outlook.com)
-  [The Cottage at Main,](#)  
540 Main St S, Southbury, CT
-  [Sherrie Solimene Romano](#)
-  [@sherrieandart](#)